

## Electrically conductive polyethylene hose, medium-heavy

### Application

- flexible hose/ ducting for gases and for dust, powder, fibres
- chemical industry: chemical vapours, vapour return hose at loading arm, paint steam, spray mist extraction
- explosion hazard area
- Coal mine, mine, tunnelling: ventilation, methane extraction

### Properties

- medium-heavy duty
- good resistance to alkalis and acids
- extremely good resistance to chemicals

- electrically conductive wall: electrical and surface resistance  $<10^3\Omega$  (according to NFPA 652  $<10^6\Omega$ )
- in accordance with ATEX 2014/34/EU (1999/92/EC) and German TRGS 727: pneumatic transport of flammable dusts and bulk materials (Zone 20, 21, 22 inside), aspiration of combustible dusts (Zone 22 inside),
- in accordance with ATEX 2014/34/EU (1999/92/EC) and German TRGS 727: for conveying for flammable liquids (inside zone 0, 1, 2), for conveying for non-flammable liquids, for use in zone 1 and 2 (gases), for use in zone 0 (gases)
- conforms to RoHS guideline
- REACH according to --> Technology / Technical Information / REACH

### Temperature Range

- 35°C to 80°C

### Design

- AIRDUC® profile hose

- AIRDUC® profile hose
- spring steel wire firmly embedded in wall
- wall: electrically conductive polyethylene (PE)
- wall thickness 0,8 mm approx.

### Delivery variants

- further diameters and lengths available on request
- black (standard)
- customer-specific branding

| I.D.        | outer Ø | Pressure | Vacuum | Bending Radius | Weight | Dimensions in Stock | Order No.     |
|-------------|---------|----------|--------|----------------|--------|---------------------|---------------|
| (in / mm)   | (mm)    | (bar)    | (bar)  | (mm)           | (kg/m) | (m)                 |               |
| 1,25 / 32   | 39.00   | 0,780    | 0,530  | 23.00          | 0.22   | 10                  | 362-0032-1003 |
| 1,5 / 38    | 45.00   | 0,660    | 0,450  | 26.00          | 0.26   | 10                  | 362-0038-1003 |
| - / 40      | 47.00   | 0,630    | 0,425  | 27.00          | 0.27   | 10                  | 362-0040-1003 |
| 2 / 50-51   | 57.00   | 0,505    | 0,340  | 32.00          | 0.33   | 10                  | 362-0050-1003 |
| 2,36 / 60   | 67.00   | 0,425    | 0,295  | 37.00          | 0.40   | 10                  | 362-0060-1003 |
| - / 70      | 79.00   | 0,365    | 0,210  | 44.00          | 0.46   | 10                  | 362-0070-1003 |
| - / 80      | 89.00   | 0,320    | 0,185  | 49.00          | 0.52   | 10                  | 362-0080-1003 |
| 3,5 / 89-90 | 99.00   | 0,285    | 0,165  | 54.00          | 0.59   | 10                  | 362-0090-1003 |
| 4 / 100-102 | 109.00  | 0,255    | 0,145  | 59.00          | 0.76   | 10                  | 362-0100-1003 |
| 5 / 125-127 | 134.00  | 0,205    | 0,120  | 72.00          | 0.94   | 10                  | 362-0125-1003 |
| 5,5 / 140   | 149.00  | 0,185    | 0,105  | 79.00          | 1.06   | 10                  | 362-0140-1003 |
| 6 / 150-152 | 159.00  | 0,170    | 0,100  | 84.00          | 1.13   | 10                  | 362-0150-1003 |
| 6,3 / 160   | 169.00  | 0,160    | 0,090  | 89.00          | 1.21   | 10                  | 362-0160-1003 |
| 8 / 200-203 | 210.00  | 0,130    | 0,075  | 110.00         | 1.51   | 10                  | 362-0200-1003 |
| - / 250     | 260.00  | 0,105    | 0,060  | 135.00         | 1.88   | 10                  | 362-0250-1003 |
| 11 / 280    | 290.00  | 0,090    | 0,055  | 150.00         | 2.10   | 10                  | 362-0280-1003 |
| - / 300     | 310.00  | 0,085    | 0,050  | 160.00         | 2.26   | 10                  | 362-0300-1003 |

Overpressure and underpressure are recommended threshold operating values, products can be subjected to higher loads upon request. The bending radius is measured through the inside of the hose arch. The right to make technical modifications is reserved. All values determined at 20°C and are approx. data. Additional information at [www.norres.com/en/technology/](http://www.norres.com/en/technology/)

Overpressure and underpressure are recommended threshold operating values, products can be subjected to higher loads upon request. The bending radius is measured through the inside of the hose arch. The right to make technical modifications is reserved. All values determined at 20 °C and are approx. data. Additional information at [www.norres.com/en/technology/](http://www.norres.com/en/technology/)

## Accessories



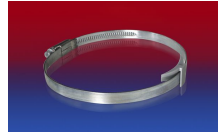
CLAMP 217



CLAMP 212 EC



CLAMP 212



CLAMP 210 BRIDGE  
CLAMP



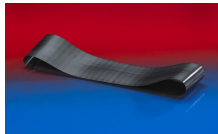
CLAMP 213



CONNECT 223



CONNECT 270-271



CONNECT 228

Overpressure and underpressure are recommended threshold operating values, products can be subjected to higher loads upon request. The bending radius is measured through the inside of the hose arch. The right to make technical modifications is reserved. All values determined at 20 °C and are approx. data. Additional information at [www.norres.com/en/technology/](http://www.norres.com/en/technology/)